



## G-Energy Synthetic Extra Life 5W-30



Бензинови и дизелови двигатели



Двигатели на немски автомобили



Отлични противоизносни свойства



Съвместимо с филтри за твърди частици



Всесезонно използване



Двигателно масло



Синтетично масло



Чистота на двигателя

G-BASE SYNTHETIC TECHNOLOGY е иновативна технология за производство на смазочни материали, съчетаваща съвременни научни постижения, уникални формули, усъвършенствано производство и контрол на качеството на продукта.

### Description

G-Energy Synthetic Extra Life 5W-30 is a synthetic motor oil based on G-Base base components, developed specifically for gasoline and diesel engines of leading German car manufacturers. Due to the reduced ash content, the product is recommended for use in engines with modern exhaust gas treatment systems, including particulate filters (DPF) and catalytic converters (TWC). The oil effectively protects parts from the formation of deposits and sludge, maintains engine cleanliness, and high anti-wear properties ensure reliable operation in engines, including those equipped with pump-injectors.

### Advantages

	Specially developed for German car engines, taking into account the requirements of VW 504 00/507 00.
	It is a product with a reduced content of sulphated ash, sulfur and phosphorus. Meets ACEA C3 requirements, compatible with exhaust gas treatment systems.
	The fully synthetic base oil provides high oil stability against oxidation.
	It reliably protects against wear even under high loads
	High resistance to high temperature and low temperature deposits.

### Application

- For cars, SUVs, vans and light trucks from Volkswagen, Mercedes Benz, BMW, etc.
- For gasoline and diesel engines (with and without turbocharger) in fleets that require oil with viscosity class SAE 5W-30 and performance level ACEA C3, API SN.
- For vehicles that require an API SN performance class or lower to improve performance, maximize protection and preserve engine life.
- Recommended for use in engines equipped with diesel particulate filters (DPF) and catalytic converters (TWC).

### Physico-chemical characteristics

Indicator	Method	G-Energy Synthetic Extra Life 5W-30
SAE viscosity class	SAE J300	5W-30
Kinematic Viscosity at 100 °C, mm <sup>2</sup> /s at 40 °C, mm <sup>2</sup> /s	ASTM D 445 ASTM D 445	12.1 69.4
Viscosity Index	ASTM D 2270	173
Flash Point (COC), °C	ASTM D 92	230
Pour Point, °C	ASTM D 97	-41
Density at 15 °C, kg/m <sup>3</sup>	ASTM D 4052	851
Total Base Number, mg KOH/g	ASTM D 2896	6.6

#### Specifications

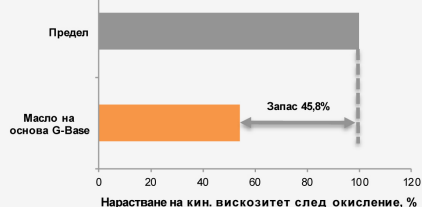
- SAE 5W-30
- API SN
- ACEA C3
- MB 229.51
- VW 504.00
- VW 507.00
- BMW Longlife-04
- Porsche C30

### Предимства от използването на G-Base синтетични базови масла

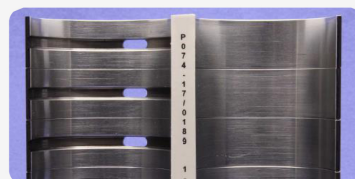


Използването на **G-Base** синтетични базови масла в маслата от серията **G-Energy Synthetic** гарантира техните отлични работни характеристики:

#### Устойчивост на маслото към стареене<sup>1</sup>

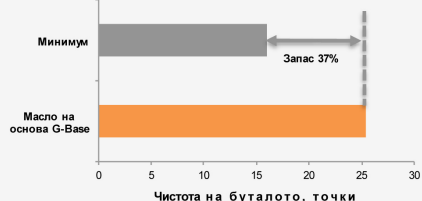


1 – Тест VW T4



Благодарение на отличната си термоокислителна стабилност, маслата G-Base са значително по-малко податливи на стареене и окисление. Това позволява продуктите, базирани на тях, да издържат по-добре на високи температури и да поддържат ефективността на маслото през целия интервал за смяна.

#### Понижаване на образуването на отлагания в двигателя<sup>2</sup>



2 – Тест OM646LA



Благодарение на високата чистота на базовите масла G-Base, продуктите на тяхна основа имат минимална склонност към образуване на всички видове отлагания. Това гарантира стабилно смазване и максимален живот на двигателя.

### Recommendations for the use of G-Energy Synthetic Extra Life 5W-30

The information is for reference only. Data is valid as of 2020. Before use, please consult the instruction manual.

Brand	Model	Engine type
AUDI	A1, A3, A4, A5, A6, A7, A8, Q1, Q3, Q5, Q7	Gasoline and diesel engines by 2020
BMW	GT, Series1, Series3, Series 4, Series5, Series7, X1,X3, X4, X5, X6	Gasoline and diesel engines by 2018
CHRYSLER	SEBRING, 300C	Gasoline engines (except 6.4 HEMI V8) since 2005
CITROEN	C1, C2, C3, C4, C5,C6, C8, DS3, DS4, DS5	Gasoline engines (Except THP, VTI, Puretech) and diesel engines since 2006
DACIA	SUPERNOVA, SOLENZA, SANDERO, LOGAN, DUSTER, LODGYM DOKKER	Diesel engines with particulate filters by 2020
DODGE	CALIBER, AVENGER	Diesel engines by 2020
FIAT	500, DOBLO, 600, SEICENTO, PANDA, PALIO, ALBEA, SIENA, IDEA, PUNTO, LINEA, BARCHETTA, BRAVO, STILO, MAREA, CROMA, SEDICI, QUBO, MULTIPLA, FREEMONT	Diesel engines by 2020
HONDA	JAZZ, CIVIC, FR-V, STREAM, ACCORD, LEGEND, HR-V, CR-V, NSX	Diesel engines with particulate filters by 2020
HYUNDAI	ACCENT, ELANTRA, GETZ, I20, I30, I40 IX35, IX55, MATRIX, SANTA FE, SOLARIS, SONATA, TERRACAN, TUCSON, VERNA	Diesel engines with particulate filters by 2020
INFINITI	G, I, JX, M, Q, EX, FX, QX	Diesel engines by 2020
JEEP	COMPASS, GRAND CHEROKEE, WRANGLER	Diesel engines by 2020
KIA	CARENS, CARNAVAL, CEED, CERATO, MAGENTIS/OPTIMA, PICANTO, RIO, SORENTO, SOUL, SPECTRA/SEPHIA/SHUMA, SPORTAGE, VENG	Diesel engines with particulate filters by 2020
LEXUS	CT, IS, GS, LS, RX, ES, NK, GX, RC	Diesel engines by 2020
MAZDA	2,3, 323, 5,6, ATENZA, AXELLA, CAPELLA, CX-3, CX-5, CX-7, CX-9, DEMIO, FAMILIA, PREMACY, VERISA	Diesel engines since 2005
MERCEDES-BENZ	A, B, C, E, S, SLK, SLC, SL, CLA, CLC, CLK, CLS, CL, GLA, GLK, GLC, M, GLE, R, G, GL, GLS	Gasoline and diesel engines by 2020
MITSUBISHI	AIRTREK, ASX, CARISMA, COLT, DION, GALANT, GRANDIS, L200, LANCER, CEDIA, LIBERO, MIRAGE, OUTLANDER, PAJERO, PININ, SPORT, SPACE STAR	Diesel engines by 2020
NISSAN	ALMERA, CUBE, EVALIA, JUKE, LEAF, MAXIMA QX, MICRA, MARCH, MURANO, NAVARA, NOTE, PATHFINDER, PATROL, TERRANO, PIXA, PULSAR, PRIMERA, QASHQAI, SKYLINE, TEANA, TIIDA, X-TRAIL	Diesel engines with particulate filters by 2020
PEUGEOT	206, 207, 3008, 307, 308, 406, 407, 408, 508	Gasoline engines (THP, VTI, Puretech) and diesel engines since 2006
PORSCHE	911, BOXSTER, CAYMAN, CAYENNE, PANAMERA, MACAN	Gasoline and diesel engines by 2020
SEAT	MII, AROSA, IBIZA, LEON, CORDOBA, EXEO, TOLEDO, ALTEA, ALHAMBRA	Gasoline and diesel engines (including with pump-injector) by 2020
SKODA	FABIA, OCTAVIA, RAPID, ROOMSTER, SUPERB, YETI	Gasoline and diesel engines (including with pump-injector) by 2020
SSANG YONG	ACTYON, CHAIRMAN, KORANDO, KYRON, MUSSO, REXTON, RODIUS	Gasoline and diesel engines by 2020
SUBARU	IMPREZA, FORESTER, LEGACY, TREZIA, TRIBECA, WRX	Diesel engines by 2020
SUZUKI	ALTO, CELERIO, WAGON, SPLASH, SWIFT, IGNIS, SX4, LIANA, KIZASHI, JIMNY, VITARA, GRAND VITARA	Diesel engines with particulate filters by 2020
TOYOTA	AURIS, AVENSIS, CALDINA, CAMRY, COROLLA, CARINA, CORONA, GAIA, HRRIER, HIGHLANDER, HILUX, IPSUM, IST, LAND CRUISER, MARK, NADIA, NOAH, OPA, PLATZ, PREMIO, PRIUS, RAV 4, SUCCEED, VERSO, VISTA, VITZ, WISH, YARIS	Diesel engines by 2020
VOLKSWAGEN	AMAROCK, BORA, GOLF, JETTA, PASSAT, POLO, SHARAN, TIGUAN, TOUAREG, TOURAN	Gasoline and diesel engines (including with pump-injector) by 2020

**The company's management system is certified in accordance with international standards**

ISO 9001



ISO 14001



ISO/TS 16949



OHSAS 18001



Gazpromneft — Lubricants Ltd.  
117218, Moscow, 14/3 Krzhizhanovski Str., Block A  
Tel: +7 (495) 642-99-69  
Fax: +7 (495) 921-48-63

The above data are typical for the current production. Due to continuous research and development, the information provided in the document may be changed.  
Information on the safe use of the product is contained in the Safety Data Sheet. You can get more detailed information from the technical specialists of the company.  
E-mail: [service@maslagaz.com](mailto:service@maslagaz.com) 01/2018